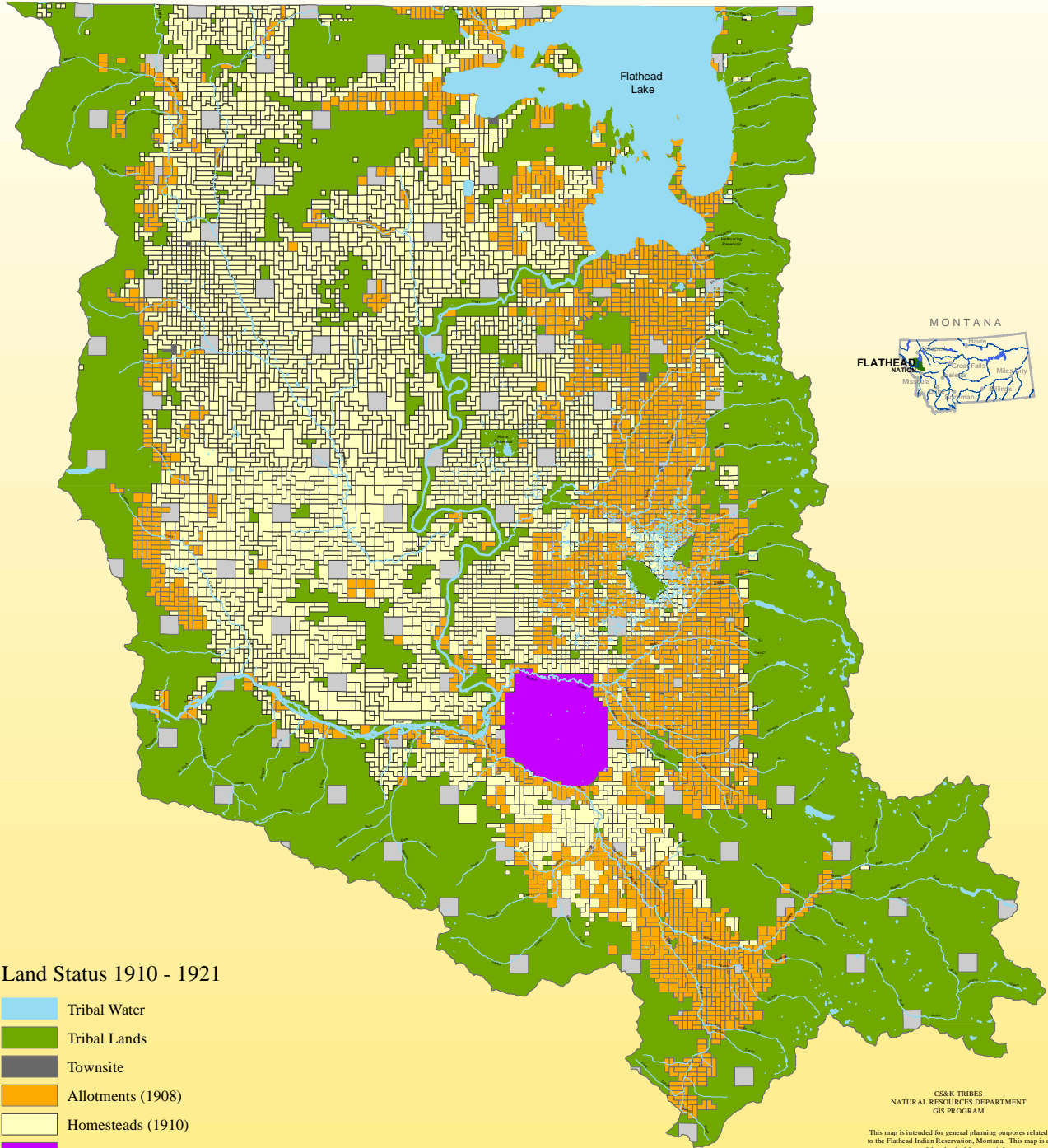




THE CONFEDERATED SALISH & KOOTENAI TRIBES OF THE FLATHEAD NATION



Land Status 1910 - 1921

- Tribal Water
- Tribal Lands
- Townsite
- Allotments (1908)
- Homesteads (1910)
- National Bison Range
- State

CS&K TRIBES
NATURAL RESOURCES DEPARTMENT
GIS PROGRAM

This map is intended for general planning purposes related to the Flathead Indian Reservation, Montana. This map is a representation of the physical features, infrastructure, and land ownership boundaries. This map should not be relied upon to establish legal title, boundary lines or locations of improvements.

Much of the land portrayed on this map is tribally owned and is closed or has restricted entry and travel rules. Please observe all tribal, local, and agency regulations/ordinances.

This map was created from records and existing map sources, not from field surveys. Actual land status is maintained by the Confederated Salish & Kootenai Tribes, Titles and Records Pkbs, Montana.

Copyright (c) 1993, 2011 CS&K Tribes Natural Resources Department. All rights reserved.

y:\arc.data\template_maps\lst190820_8x11_Aug2011.mxd